

GRAV10 - High-precision Gravimeter

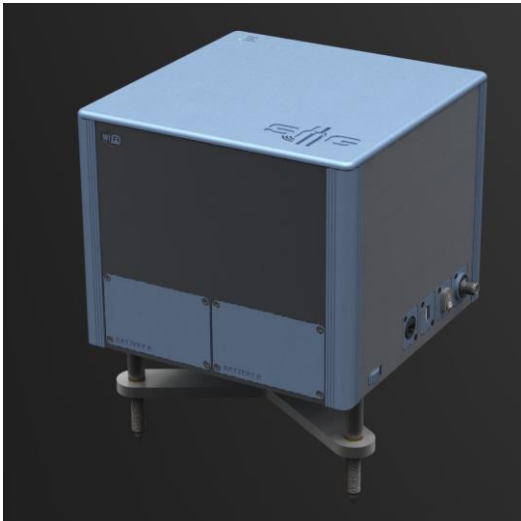
The SMG GRAV10 is a resonant MEMS vibrating beam relative gravimeter with a resolution of better than 10 microGal.

GRAV10 includes automated compensation for temperature, pressure, instrument tilt and tide. The GRAV10 filters seismic noise filter and compensates for sensor drift.

GRAV10 interfaces with a laptop or tablet via WiFi, Bluetooth or Ethernet for display and controls

GRAV10 includes a GPS capability for accurate location.

Rechargeable batteries provide 15 hours of continuous operation



Product Specifications

Resolution	< 10 microGal
Standard deviation	10 microGal
Drift uncompensated	0.5 milliGal/day
Residual drift (compensated)	0.05 milliGal/day
Sensor type	MEMS
Range of automatic tilt compensation	+/- 1000 arc.sec
Operating temp range	-40°C to +80°C
Power consumption	15 Watts at 25 °C
Connectivity	WiFi
Remote trigger	WiFi
Memory	256GB SSD
Data I/O port	Cloud, USB, WiFi
Operating range	Worldwide
Dimensions	25cm x 25cm x 25cm